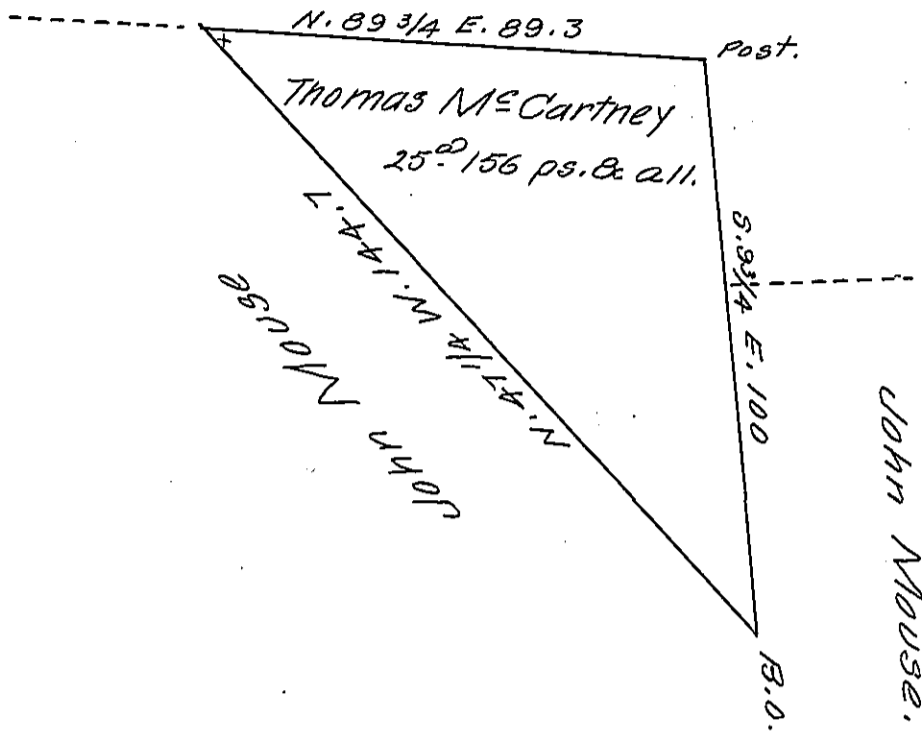


Sarah Clemens



Situate in Mount pleasant Township Adams County Being
 part of a larger tract said to contain 294^{ac} & allce. Surveyed June
 19th 1751 by George Stevenson D.S. by Warrant to Thomas Mc Cartney
 Dated Sep. 10th 1750 Divided from the residue August 16th 1810
 Containing twenty five acres one hundred & fifty six perches
 obl. allce. for Sarah Clemens.

By Sam^l Sloan D.S.

To Andrew Porter Esq^r
 Surveyor General.

IN TESTIMONY that the above is a copy of the original remaining on file in
 the Department of Internal Affairs of Pennsylvania, made
 conformably to an Act of Assembly approved the 16th day of
 February, 1833, I have hereunto set my Hand and caused
 the Seal of said Department to be affixed at Harrisburg,
 this first day of February 1906

Grace R. Brown
 Secretary of Internal Affairs.